



Castle Stuart Golf Links Clubhouse, Scotland; Architects: G1 Architects.

12.2012

## Nordic Blue – pre-patinated copper

Nordic Blue™ products offer designers unparalleled design freedom and the ability to determine the type and intensity of blue patina for each project with choices of 'Living' surfaces. In a carefully controlled, factory process, pre-oxidised copper is sprayed treated with specifically formulated copper compounds to create the desired patina colours and heat-treated to chemically bind them to the copper.

The factory process can be accurately controlled so that, as well as the solid blue patina colour, other intensities of patina flecks can be created revealing some of the dark oxidised background material. Aurubis' experts can also work in partnership with architects to develop special individual levels of patination to meet their design requirements or to match historically patinated copper on existing buildings.

The material is easily bent and formed, and there are no limitations on the length of pre-patinated copper sheet or strip because whole coils are treated on the production line, not just limited size sheets.

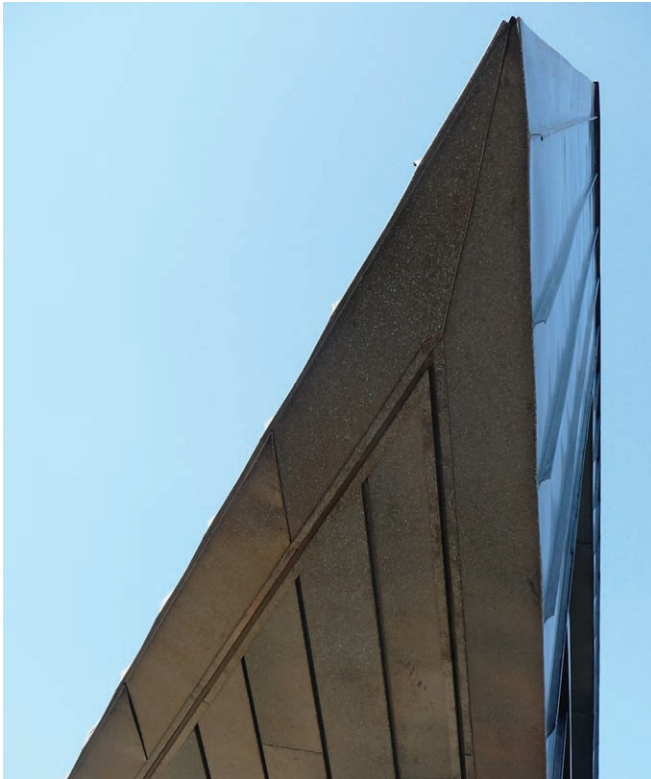
Nordic Blue™ is available in sheets or coils with one surface treated.

- › Thickness range: 0.5 – 1.5 mm
- › Maximum width: 1000 mm.

It can also be provided in a wide range of different forms and used in various systems.



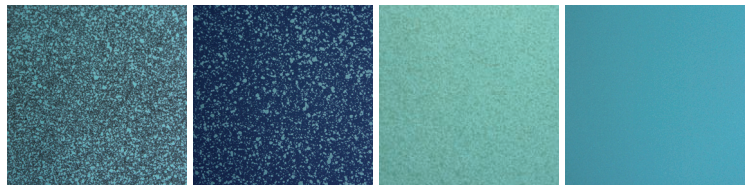
Central Rmz, Widnes, UK; Architects: Austin-Smith: Lord.



The most common compound found in natural patinas all over the world is the copper sulphate mineral brochantite. Aurubis' factory-applied patinas have been developed with properties and colours based on the same brochantite mineralogy.

In marine climates, the natural copper patina contains some copper chloride giving it more of a blue colour and this is emulated with Nordic Blue™. Brochantite is a light blue colour and Aurubis' Nordic Blue™ patination is 100 % brochantite.

By its nature, Aurubis' pre-patination process encourages the continuing formation of natural patina by releasing copper sulphate to react with the copper below. So, just like natural patina, Nordic Blue™ undergoes continuous changes through environmental exposure dependant upon local atmospheric and rainfall condition.



Nordic Blue™ Living 1

Nordic Blue™ Living 2

Nordic Blue™ Living 3

Nordic Blue™ Traditional

